

inSite Wearable Safety Devices

Extra protection for those working in high risk/volatile/public facing environments



Product overview

Clearway, have developed innovative wearable technology to help protect those working in high risk/volatile environments such as construction, highways and security, and lone workers.

Current 'bodycam' solutions mean you need different devices for various activities. Clearway has amalgamated these into one piece of equipment for the operative/lone worker in either the form of a bodycam or for some use cases the device simply attaches to a workers hard hat – 'helmet cam'.

Reducing roadworker exposure has been a real focus area across highway networks over the last few years, given the ever-increasing complexity of infrastructure projects and the unfortunate increase in roadworker abuse. Many network operators are turning to bodycam technology to record these incidents and help with remote support for engineers on the ground.

Why inSite Wearable Safety Devices?

- ✓ Deters and de-escalates threatening/aggressive behaviour towards staff
- ✓ Provides evidence via high quality video to support investigations and prosecutions
- ✓ Reduces false allegations and unjustified complaints against workers
- ✓ Record footage in areas not monitored by existing CCTV
- ✓ Footage can be used for training to further understand behaviours and security risks

With the function to live stream, this also means less return visits to site, you can easily have your co-workers log in live to what you are looking at and solve issues in real-time on site, giving the view from the worker's eye level perspective. This also reduces the need for people to attend site for inspections and helps designers with technical queries.

inSite



HELMET CAM

BODYCAM

LONE WORKER

Applications

- Lone workers
- Depots and schemes
- Construction sites
- Security





PRODUCT BRIEF

inSite Wearable Safety Devices

HELMET CAM



LONE WORKER



BODYCAM



✓ CAPTURE ✓ RECORD ✓ DETER



1080 recording &
720 live streaming



12-hour lithium battery
life – quick charging to
protect every worker
across every shift



Real time location



Redact faces & number
plate information via
online portal



Live SOS alerting back to our
NSI Gold Cat II Alarm
Receiving Centre (ARC)



Team leader audio
broadcast function



Lone worker auto alerts
for slips, trips & falls
with inbuilt G sensor



2-way audio
communications





Innovative solution

The devices themselves are small and robust but packed with innovative solutions to support both the delivery of infrastructure projects and lone workers. 1080p recording onto the device and 720 live streaming allows any details to be picked up and with an intuitive online-based portal you can view live footage, review footage and even redact faces and numberplate information. This function allows videos to be shared for training purposes as well as in any publicity on dangerous occurrences caused by public interactions and altercations.

Real-time location allows people managers to know where their staff are at any point in time, distance travelled and how long they have been active online, the output of which supports things like fatigue management and operative deployment efficiencies.



Effective communications

Two-way communications and the broadcast function help with alerting workers to things happening on site at any given moment and for operative / lone worker check-ins.

The SOS alerting function allows a user to alert back to Clearway's NSI Gold Cat II Alarm Receiving Centre (ARC) and auto upload a pre-determined period of video into an evidence locker. This locker is where video you want to store is kept for a period of time in line with a client's GDPR policy, and users have the ability to redact information.



The SOS alerting function allows a user to alert back to Clearway's NSI Gold Cat II Alarm Receiving Centre (ARC)

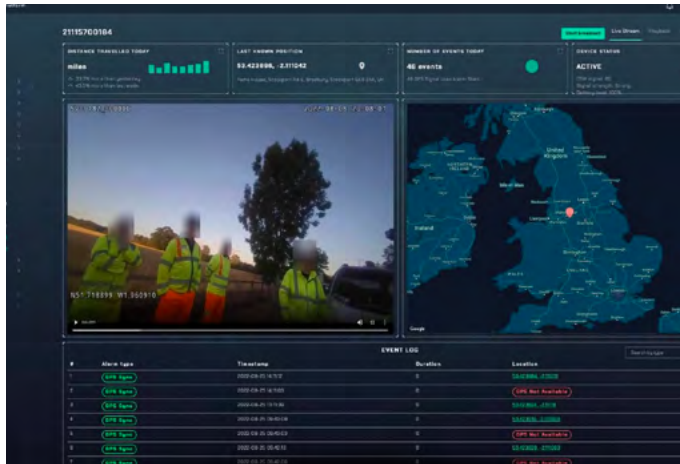




Improved protection

As well as the auto upload to the evidence locker, operatives in the monitoring station (ARC) can view live footage and give live instruction to the wearer. For instance, if the person carrying or wearing the device feels they're in danger, they can press the relevant button and then instantly connect to our monitoring station (ARC) or if an altercation with a member of the public is happening on site and the incident is escalating, the monitoring staff can alert the local police force and relay that information back to the operative/lone worker.

We have also developed the solution to have an inbuilt G sensor, this sensor allows automatic alerts to be sent through to the monitoring station (ARC) with any large impact like a slip trip or fall. The alarm is raised and two-way comms between the wearer and the monitoring staff can determine what course of action is required, if there is no response the real-time location nature of the solution means we can alert other team members or the emergency services where needed.



... the alarm is raised and two-way comms between the wearer and the monitoring staff can determine what course of action is required.



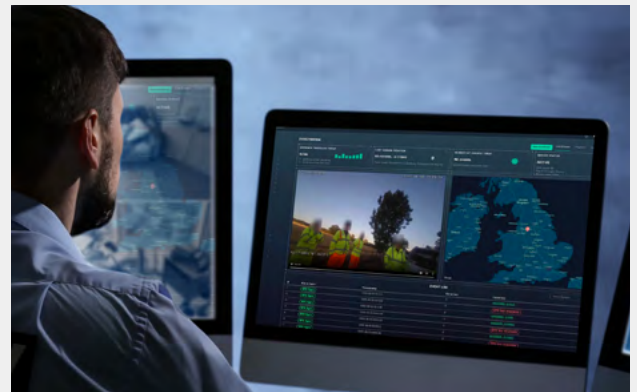
NSI Gold Cat II Alarm Receiving Centre (ARC)

At Clearway we have our own high security, 24/7/365, NSI Gold Cat II Alarm Receiving Centre (ARC), which provides complete peace of mind to all of our clients.

This facility removes the headache, expense and duplication of energies in providing facilities and staffing on projects where temporary monitoring and detection is required. We are licensed to monitor, react to alerts, and deal directly with incidents whilst operating a professional and transparent service to the highest recognised and audited standards in the UK.



Alarm monitoring
& handling



Technical information – **Bodycam**

Features		
Video	Video input	1x digital built-in camera. Also supports additional external camera where required
	Display	2-inch LCD screen
	Recording resolution	1080p / 1296p / 1440p / 1512p
	Frame rate	30 fps@ (1080p / 1296p /1440p) / 25 fps@ 1512p
	Record mode	Simultaneous audio and video recording. On demand or continuous recording modes.
	Compression	H.264 / H.265
	Live video resolution	720p / 1080p / 1296p / 1440p / 1512p
	Photograph	4M, 16M, 64M
	Snap	Snapshot during recording (photo resolution based on recording resolution)
	Storage	Embedded storage (32~128GB)
Audio	Audio input	1x MIC input, supports intercom connection with USB
	Audio record	Supports audio recording
Light source	Flashlight	To increase visibility when you are recording or taking a photo in low light
	Laser	Indicates the focal point of lens
	IR	Up to 10 Metres
Radio	Push to Talk	Two-way radio between different devices (requires cellular connection)
	Intercom	Two-way radio between device and platform (requires cellular connection)
Lens	Lens' angle	>115°
Network	Protocol	TCP/IP
	3G/4G	Embedded
	WiFi	Embedded
	Bluetooth	BT4.1
GPS	GPS	Embedded
Features	OSD	Display record time, device ID & location
	Overwrite	Supported
	Play back	Support play back, file listed by time and alarm
	Play speed	Support from 1/128 to 128
	Pre-recording/post recording	Maximum 10s pre-recording and 20s post-recording
	Recording encryption	Supports recording encryption
Environmental	Temperature	-40 – +60°
	Humidity	40% ~ 80%
Other	Time	Synchronised with GPS
	Dual bit stream	Two different bit streams for recording and live streaming via 4G/3G
	Indicator lights	Power, record, snap, audio record
	Battery capacity	4000mAh non-replaceable battery, 4G device recording for about 12h - charging time is approx. 4h
	IP Rating	IP68
	Dimensions	83.2*54.8*29.8mm
	Weight	Approx. 145g



Technical information – **Helmet Cam**

Features		
Video	Video input	1x digital built-in camera
	Display	0.96 inch TFT info screen
	Recording resolution	720p/ 1080p
	Frame rate	30 fps@ (720p/ 1080p)
	Record mode	Simultaneous audio and video recording. On demand or continuous recording modes.
	Compression	H.264 / H.265
	Live video resolution	720p / 1080p
	Photograph	>20M
	Snap	Snapshot during recording (photo resolution based on recording resolution)
	Storage	Removable TF storage (16 ~ 128GB)
Audio	Audio input	1x MIC input, supports intercom connection with USB
	Audio record	Supports audio recording
Light source	Flashlight	To increase visibility when you are recording or taking a photo in low light
	Laser	Indicates the focal point of lens
Radio	Push to Talk	Two-way radio between different devices (requires cellular connection)
	Intercom	Two-way radio between device and platform (requires cellular connection)
Lens	Lens' angle	>80°
Network	Protocol	TCP/IP
	3G/4G	Embedded
	WiFi	Embedded
	Bluetooth	BT 5.0
GPS	GPS	Embedded
Features	OSD	Display record time, device ID & location
	Overwrite	Supported
	Play back	Support play back, file listed by time and alarm
	Play speed	Support from 1/128 to 128
	Pre-recording/post recording	Maximum 10s pre-recording and 20s post-recording
	Recording encryption	Supports recording encryption
Environmental	Temperature	-20° – +55°
	Humidity	5%RH - 95%RH non-condensing
	Drop test	2-metre drop test
Other	Time	Synchronised with GPS
	Dual bit stream	Two different bit streams for recording and live streaming via 4G/3G
	Indicator lights	Power, record (audio prompts for all buttons)
	Battery Capacity	2500 mAh X2 (interchangeable) +280mAh, 4G device recording for about 8 hours - charging time is approx 2 hours
	IP rating	IP66
	Dimensions	230.0*200.50*36.40mm
	Weight	300g ± 5g (battery 46g included)





PRODUCT BRIEF

inSite Wearable Safety Devices



Technical information – Lone Worker

Features

2G cellular connectivity

SOS and Man Down functionality

Bi-Directional Intercom with IoT Platform

SOS alarm notifications to IoT platform

Man down & No movement alarm notifications to IoT platform

Real Time GPS

GeoFence

5 Configurable buttons

Bluetooth

1050mAh battery

IP30 rating

93mm (l) x 64mm (w) x 10mm (d)

80g

PROTECT WHAT MATTERS

The Clearway team can also provide a range of security solutions including PPE detection and temporary CCTV cameras for car parks, offices and highways projects.



About Clearway

Clearway is a leading security services provider specialising in the protection of people, property and assets. Growing organically and via acquisition, Clearway is managed by an experienced team with proven industry success and a clear vision for growth.

**See how we can help you,
talk to our experts today**

T: 0330 088 1973 E: sales@secureemptyproperty.com

www.secureemptyproperty.com

All details are correct at time of going to press. E&OE. Dec 2023.



Secure Empty Property

Now part of

