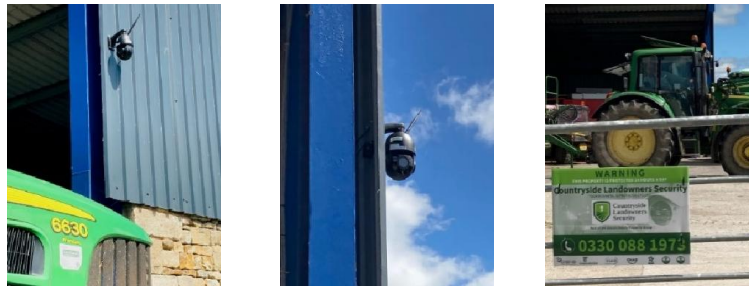


## Country Landowners Security 360 Dome Camera WIFI Setup Steps



### **Step 1: Camera mount and antenna attachment**

- Screw the 3 small bolts screws into the black swan mounting bracket
- Feed the camera cables through the mounting bracket
- Orientate the mount so it is in line with the arrow on the camera body
- Tighten the three bolts to securely attach the mounting bracket
- Carefully attach the antenna

### **Step 2: Inserting SD card (optional)**

- Insert your SD card (optional) as shown in the photo below



**National Service Centre:** 0330 912 7424

**E Mail:** [operations@countrysidelandownerssecurity.com](mailto:operations@countrysidelandownerssecurity.com)

**Head Office:** Integrity House, Unit 14, Three Point Business Park, Charles Lane, Haslingden, BB4 5EH

[www.countrysidelandownerssecurity.com](http://www.countrysidelandownerssecurity.com)

Follow us   

*Countryside Landowners Security is part of Secure Empty Property Limited specialising in rural security technology*



### **Step 3: Power on your new camera**

- Connect your camera to the power supply box and power it on (during this stage please hold your camera carefully by the mount as it will begin to rotate during the start-up process)
- Connect the black speaker to the RCA connector on the camera (This is 1 of the 4 cables coming from the camera).

Please note the rest of the cables from the power supply box are not required, you only need to use the DC barrel connector for power supply.

- Note: If you are using our 12V battery connection leads you will not need to use the cameras power supply

### **Step 4: Connecting your camera to the CamHiPro app**

- On your phone or tablet go to the App / Google Play store and download the app CamHiPro
- Once the app has downloaded open it up and give it permissions
- On your phone look for the WIFI network IPCAM\*\*\* and connect to it using the password: 01234567

**National Service Centre:** 0330 912 7424

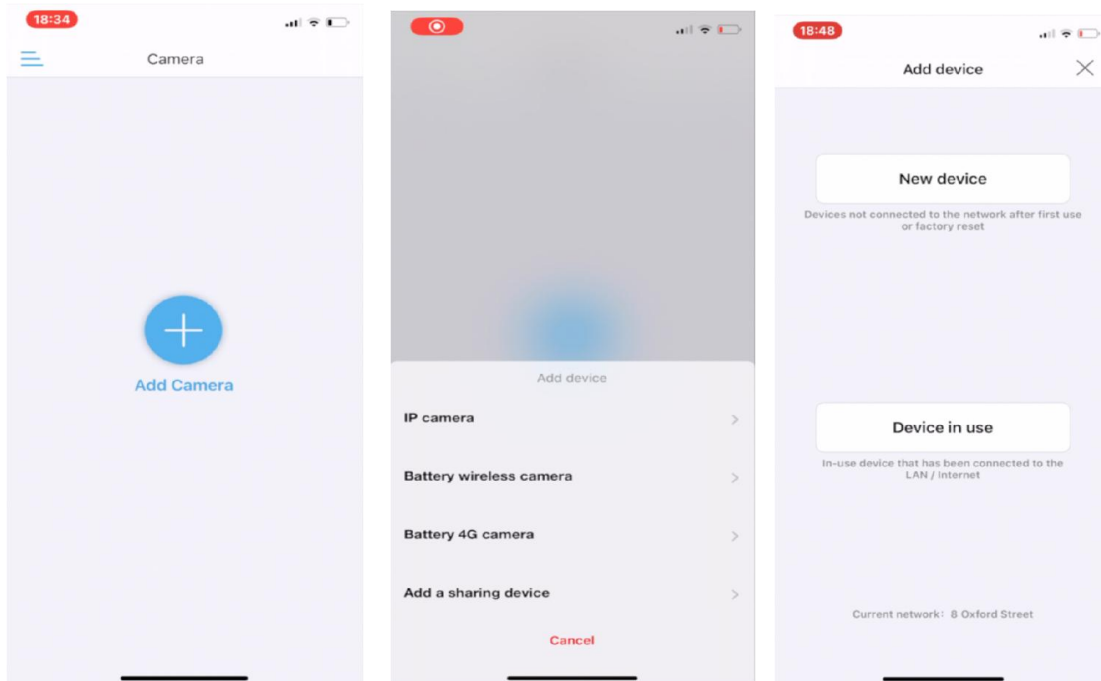
**E Mail:** [operations@countrysidelandownerssecurity.com](mailto:operations@countrysidelandownerssecurity.com)

**Head Office:** Integrity House, Unit 14, Three Point Business Park, Charles Lane, Haslingden, BB4 5EH

**[www.countrysidelandownerssecurity.com](http://www.countrysidelandownerssecurity.com)**

Follow us   

***Countryside Landowners Security is part of Secure Empty Property Limited specialising in rural security technology***



1, Select add Camera

2, Select IP Camera

3, Select Device in use

**Note:** If you are connecting your camera to a battery or solar panel please still select IP camera in the above step 5. DO NOT SELECT BATTERY CAMERA.

**National Service Centre:** 0330 912 7424

**E Mail:** [operations@countrysidelandownerssecurity.com](mailto:operations@countrysidelandownerssecurity.com)

**Head Office:** Integrity House, Unit 14, Three Point Business Park, Charles Lane, Haslingden, BB4 5EH

[www.countrysidelandownerssecurity.com](http://www.countrysidelandownerssecurity.com)

Follow us   

*Countryside Landowners Security is part of Secure Empty Property Limited specialising in rural security technology*

**4, Scan QR Code or Search Nearby devices**

**5, Select Add To**

**6, Name your camera & select**

**National Service Centre:** 0330 912 7424

**E Mail:** [operations@countrysidelandownerssecurity.com](mailto:operations@countrysidelandownerssecurity.com)

**Head Office:** Integrity House, Unit 14, Three Point Business Park, Charles Lane, Haslingden, BB4 5EH

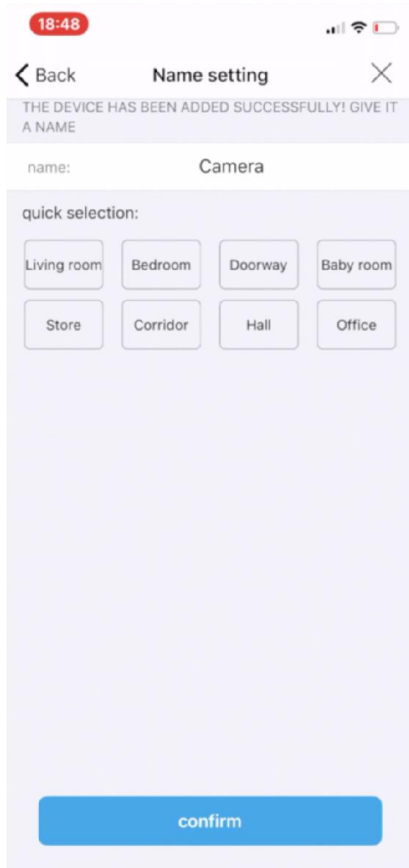
[www.countrysidelandownerssecurity.com](http://www.countrysidelandownerssecurity.com)

Follow us   

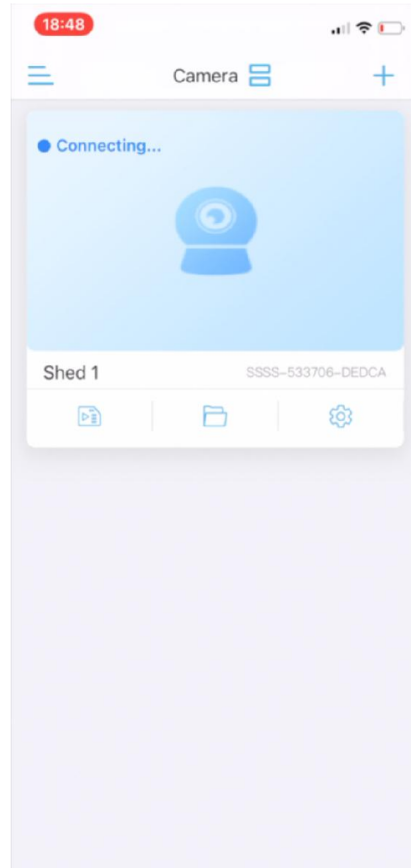
*Countryside Landowners Security is part of Secure Empty Property Limited specialising in rural security technology*



Countryside  
Landowners  
Security



**6, Name Your Camera and Select Connect**



**7, Wait 10/15 Secs For Your Camera To Connect**

**National Service Centre:** 0330 912 7424

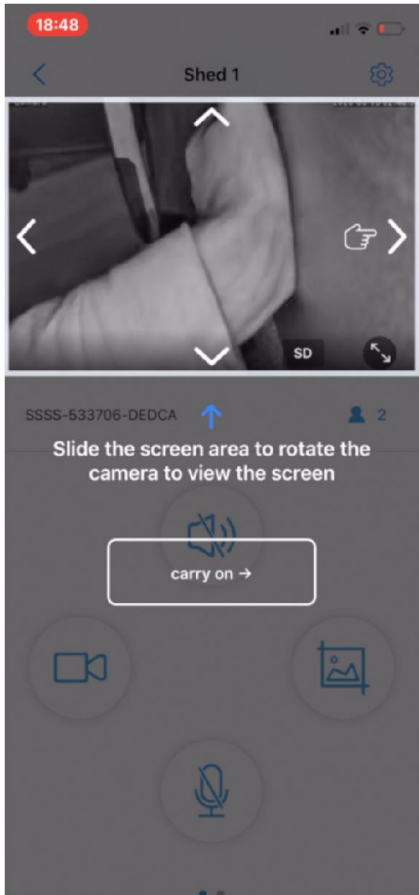
**E Mail:** [operations@countrysidelandownerssecurity.com](mailto:operations@countrysidelandownerssecurity.com)

**Head Office:** Integrity House, Unit 14, Three Point Business Park, Charles Lane, Haslingden, BB4 5EH

[www.countrysidelandownerssecurity.com](http://www.countrysidelandownerssecurity.com)

Follow us   

*Countryside Landowners Security is part of Secure Empty Property Limited specialising in rural security technology*



## 8, Follow Tutorial

**National Service Centre:** 0330 912 7424

**E Mail:** [operations@countrysidelandownerssecurity.com](mailto:operations@countrysidelandownerssecurity.com)

**Head Office:** Integrity House, Unit 14, Three Point Business Park, Charles Lane, Haslingden, BB4 5EH

**[www.countrysidelandownerssecurity.com](http://www.countrysidelandownerssecurity.com)**

Follow us   

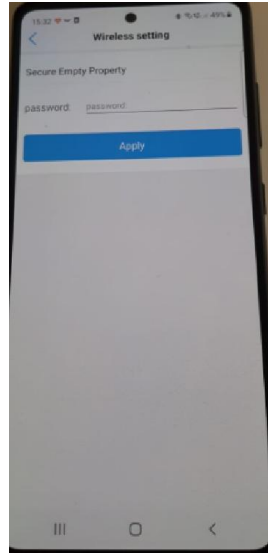
*Countryside Landowners Security is part of Secure Empty Property Limited specialising in rural security technology*

## **Step 5 : Connecting Your Camera To Existing WIFI Network**

- Select the camera settings icon



### **1, Select Wireless Settings**



### **2, Select your home WIFI**

**And enter password and apply**

- Select wireless settings
- Select ' get the wireless network around the device'
- Select your WIFI network and enter your WIFI password
- Your camera should now be connected to your WIFI network

## **Step 6 : Changing your camera's password**

- Select the camera's settings menu
- Select change password

**National Service Centre:** 0330 912 7424

**E Mail:** [operations@country sidelandownerssecurity.com](mailto:operations@country sidelandownerssecurity.com)

**Head Office:** Integrity House, Unit 14, Three Point Business Park, Charles Lane, Haslingden, BB4 5EH

[www.country sidelandownerssecurity.com](http://www.country sidelandownerssecurity.com)

Follow us   

***Countryside Landowners Security is part of Secure Empty Property Limited specialising in rural security technology***



- Your old password is 'admin', enter a new password and record it somewhere safely. You will need this password to share the camera to other devices

### **Step 7 : Mounting your camera**

- Mount your camera in the desired location and re-connect to power

### **Controlling your 360 Camera**

- In order to move your 360 camera place your finger in the centre of the screen and swipe in the direction you wish to move.
- The camera defaults to SD when installed, Click on SD to change to HD for a higher quality
- Within the camera menu you will find recording/photo options along with the zoom function
- Your camera will auto-focus, we don't recommend the manual-focussing found within the zoom option

### **Connection troubleshooting.**

My camera shows offline :

- Reboot the camera
- Try using adding the camera to a different device
- Repeat step 5 to ensure your camera is successfully connected to your WIFI network.

**National Service Centre:** 0330 912 7424

**E Mail:** [operations@countrysidelandownerssecurity.com](mailto:operations@countrysidelandownerssecurity.com)

**Head Office:** Integrity House, Unit 14, Three Point Business Park, Charles Lane, Haslingden, BB4 5EH

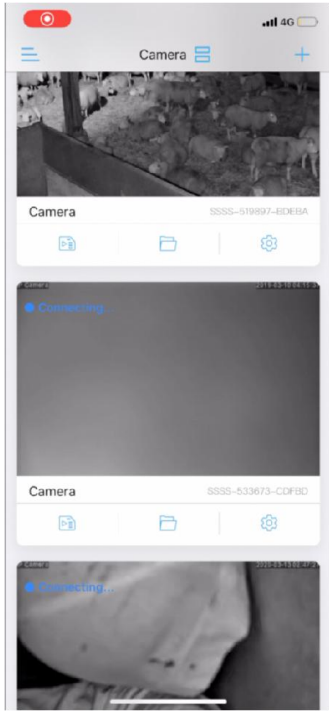
**[www.countrysidelandownerssecurity.com](http://www.countrysidelandownerssecurity.com)**

Follow us   

***Countryside Landowners Security is part of Secure Empty Property Limited specialising in rural security technology***



**Sharing your camera to another device.**



**1, Click on camera  
Settings**



**2, Click on the top right  
icon to display the cameras  
Sharing QR**



**3, This is your sharing  
QR code**

**National Service Centre:** 0330 912 7424

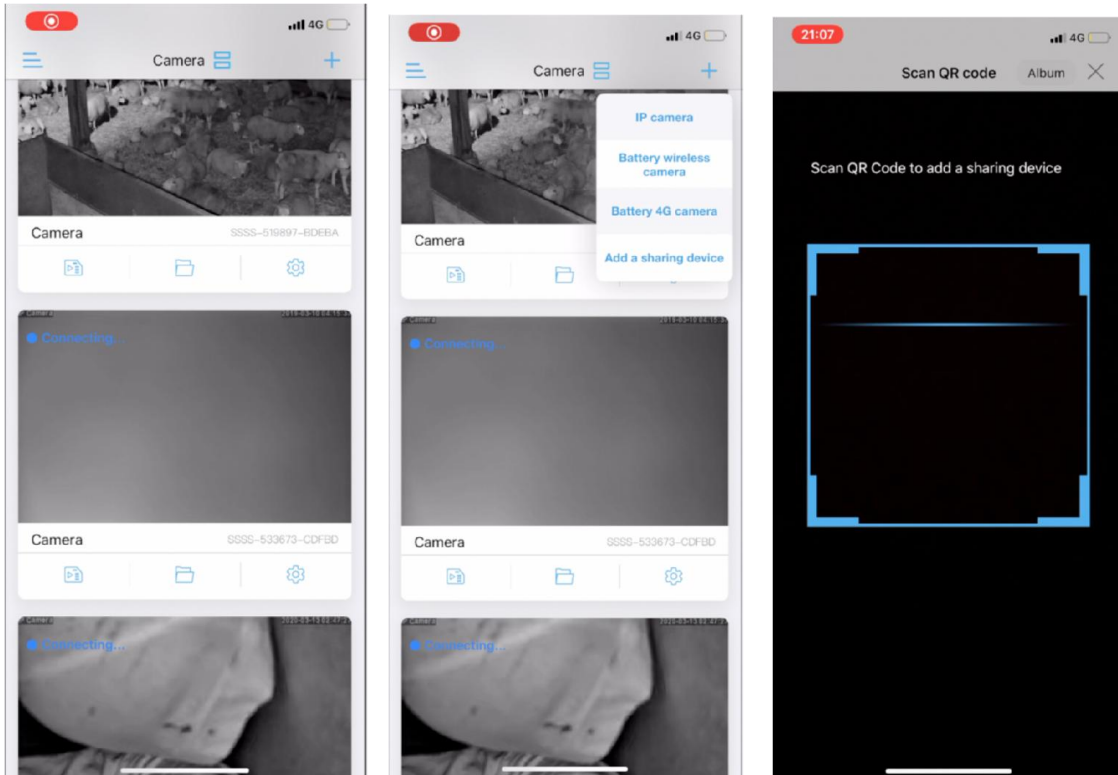
**E Mail:** [operations@country sidelandownerssecurity.com](mailto:operations@country sidelandownerssecurity.com)

**Head Office:** Integrity House, Unit 14, Three Point Business Park, Charles Lane, Haslingden, BB4 5EH

**[www.country sidelandownerssecurity.com](http://www.country sidelandownerssecurity.com)**

Follow us   

***Countryside Landowners Security is part of Secure Empty Property Limited specialising in rural security technology***



4, On the 2<sup>nd</sup> device click

**Add device**

5, Add a sharing device

**QR code**

6, Scan the sharing

- Enter the following login details:
  - Username : admin
  - Password : admin ( unless you have already changed this.

### **Optional Configuration**

Configuring motion recording:

- In the camera settings select ' alarm management and notification'
- Toggle 'motiondetectionalarm' to ON

**National Service Centre:** 0330 912 7424

**E Mail:** [operations@country sidelandownerssecurity.com](mailto:operations@country sidelandownerssecurity.com)

**Head Office:** Integrity House, Unit 14, Three Point Business Park, Charles Lane, Haslingden, BB4 5EH

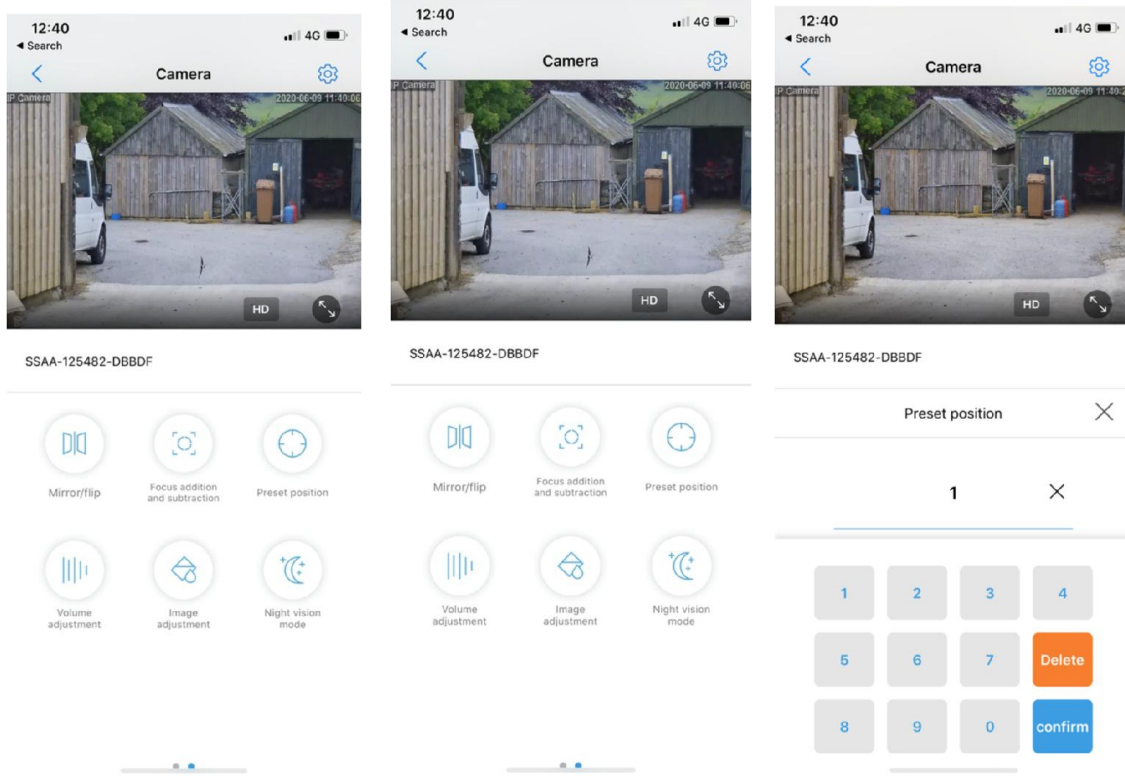
[www.country sidelandownerssecurity.com](http://www.country sidelandownerssecurity.com)

Follow us   

*Countryside Landowners Security is part of Secure Empty Property Limited specialising in rural security technology*

- Adjust the motion detection area and sensitivity as required. We recommend selecting a small motion detection area in the centre of the frame where there is no vegetation.

## Saving Favourite Positions



**1, Select the camera then  
Select present position**

**2, Select setup**

**3, Enter a number to represent  
the current view**

**National Service Centre:** 0330 912 7424

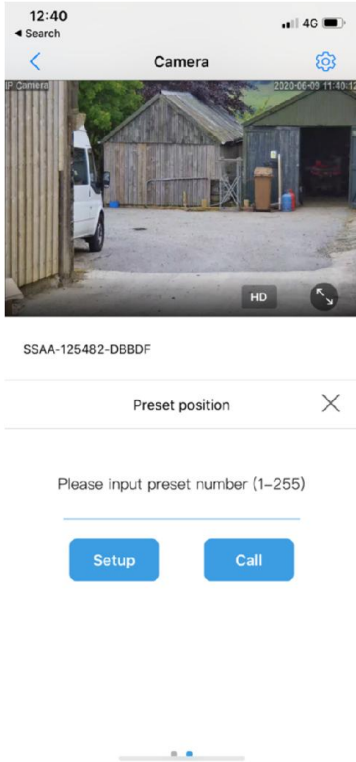
**E Mail:** [operations@country sidelandownerssecurity.com](mailto:operations@country sidelandownerssecurity.com)

**Head Office:** Integrity House, Unit 14, Three Point Business Park, Charles Lane, Haslingden, BB4 5EH

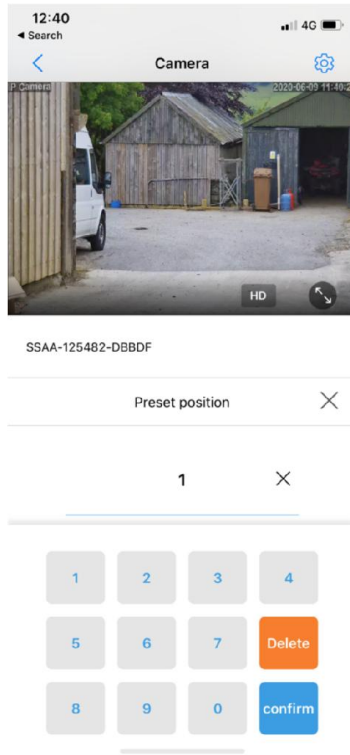
[www.country sidelandownerssecurity.com](http://www.country sidelandownerssecurity.com)

Follow us   

*Countryside Landowners Security is part of Secure Empty Property Limited specialising in rural security technology*



**4, Any saved view can be Viewed by selecting call**



**5, Enter the value corresponding to the desired position. The camera Will automatically move to that position.**

**National Service Centre:** 0330 912 7424

**E Mail:** [operations@countrysidelandownerssecurity.com](mailto:operations@countrysidelandownerssecurity.com)

**Head Office:** Integrity House, Unit 14, Three Point Business Park, Charles Lane, Haslingden, BB4 5EH

**[www.countrysidelandownerssecurity.com](http://www.countrysidelandownerssecurity.com)**

Follow us   

***Countryside Landowners Security is part of Secure Empty Property Limited specialising in rural security technology***